

GEMMA Neo
Perfection in micro nutrition

GEMMA
Neo



SKRETTING
a Nutreco company







GEMMA Neo



Weaning flexibility
and increased
attraction



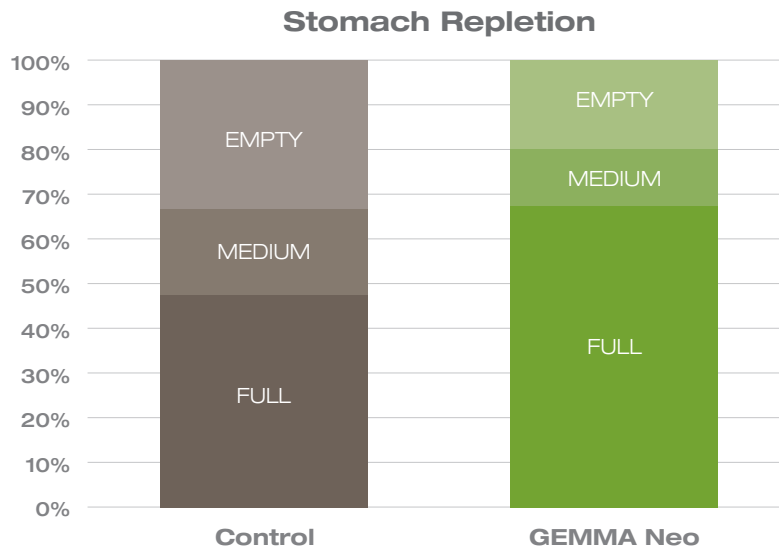
Improved
water quality



Simplified
operations



Weaning flexibility and increased attraction

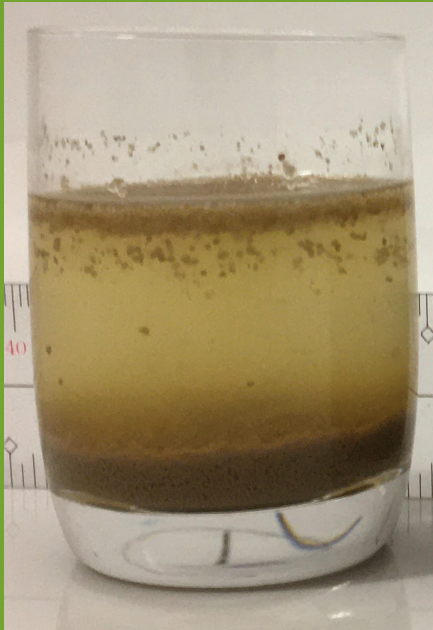


GEMMA Neo is produced using a specific low-temperature production process, leading to reduced protein denaturation and increased nutrient preservation, to ensure maximum attraction and nutrition for juvenile fish. The process mimics the natural process in which larvae consume pre-digested proteins.

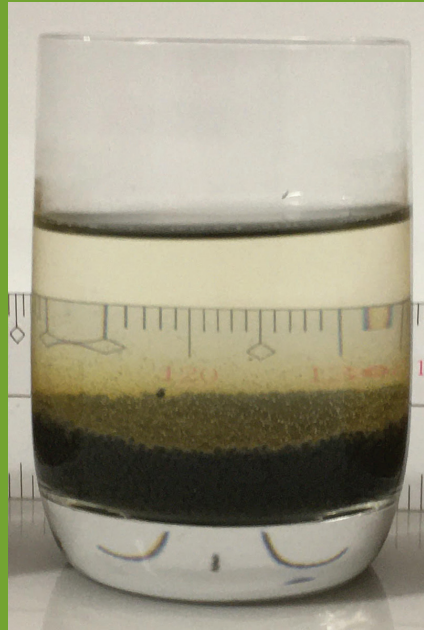
Thanks to its fast uptake by the larvae, various weaning strategies can be followed to meet local requirements.



Improved water quality



Control



GEMMA Neo

GEMMA Neo reduces the negative impact on water quality and surface film, oil & foam formation leading to improved overall tank hygiene. This in turn reduces the demand on skimmer systems & subsequent need for toweling:

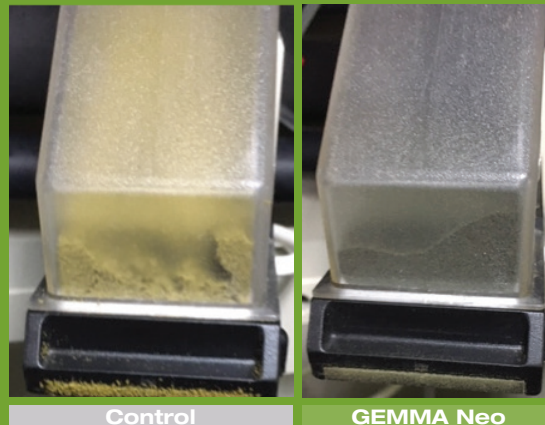
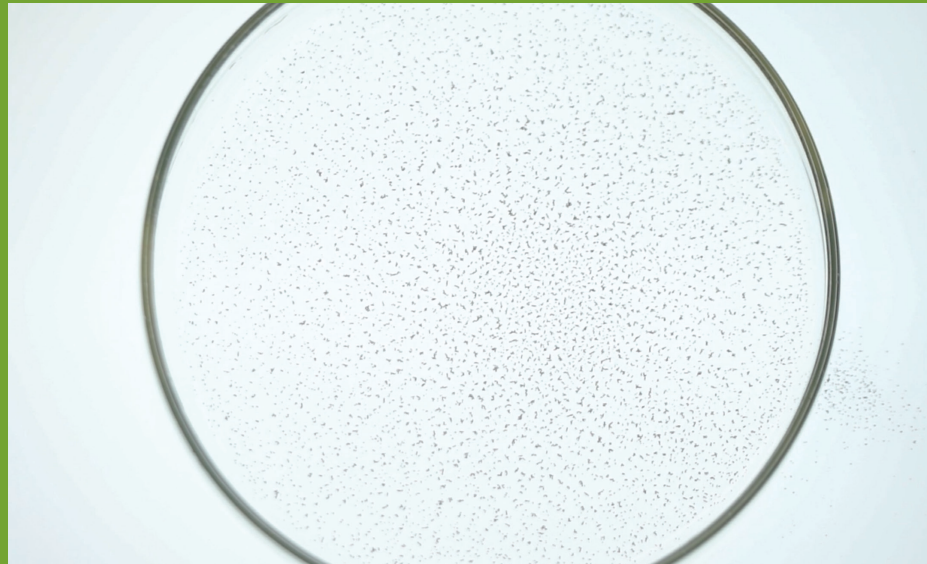
- Reduced foam & oil formation on water surface
- Less stress on the system and reduced load in the skimmer
- Increased feed stability



Simplified operations

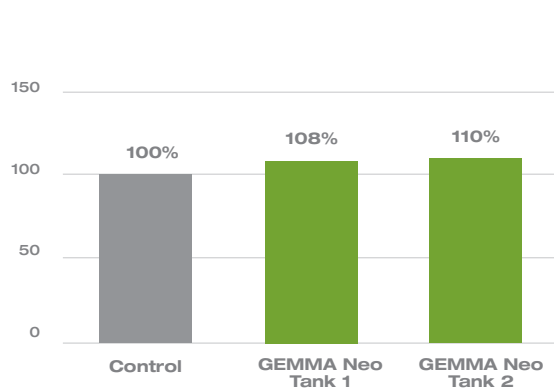
Homogenous spread of feed on the water

The hydroscopic properties of a feed determine how free flowing and evenly the feed spreads on the water surface. But it also determines how much clumping will occur with the feed in the warm moist atmosphere of a hatchery. **GEMMA Neo** is formulated with optimal raw material quality, reduced dust and cellular encapsulation of the lipid fractions, creating a hydrophilic product that maintains a low viscosity. This results in less blocking of feeders, more consistent feeding events and consequently easier operations for farmers.

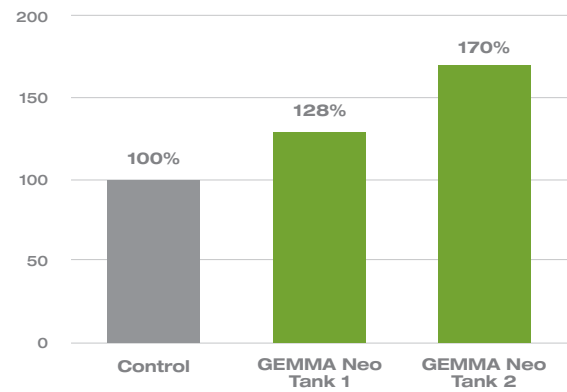


Based in commercial facility - sea bream

Relative length in 30 dph (% control)



Relative average weight in 64 dph (% control)



GEMMA Neo shows good performance under high density conditions in commercial hatchery. Larvae were already notably larger at 31dph having started feeding at 19dph and grading at 64dph revealed a significant improvement in fish weights.

Skretting is the global leader in providing innovative and sustainable nutritional solutions and services for the aquaculture industry. Skretting has production facilities in 19 countries on five continents, and manufactures and delivers high quality feeds from hatching to harvest for more than 60 species. The total annual production volume of feed is more than 2 million tonnes. The head office is located in Stavanger, Norway. Skretting is the aquaculture division of Nutreco, a world leader in animal nutrition. Our purpose is #Feeding the Future.

www.skretting.com

